



The Wonder of Warje

2 & 3 BHK

SUPER-LUXURIOUS NEARING POSSESSION HOMES

WITH LARGEST BALCONIES IN WARJE

Corporate Office - 408/10, Purandar Complex, Mukund Nagar, Pune-411037

Site Office - KJ Towers, Off Pune-Bangalore Highway, Near Mai Mangeshkar Hospital, Pune-411058

MAHARERA registration number: P52100008908 and is available on the website <https://maharera.mahaonline.gov.in>



KALYAN JADHAV GROUP

Creator of the Wonder

After creating a strong foothold in the infrastructural and educational developments, **KJ Group** is all set to change Pune's skylines by creating residential marvels. The Group was **established in 1985**, and since then, it has been climbing the ladder of success by creating benchmark projects.

From land development to highways, educational institutes to water reservoirs, **KJ Group** has achieved excellence in creating everything with finesse. **Mr. K J Jadhav** has travelled a long way and ushered in the nineties with several works that are nothing less than wonders.



MADE FOR REPRESENTATION PURPOSE ONLY

Initiatives

by **KJ Group**



Infrastructure:

KJ Infra has developed well-known projects in infrastructural development.

Land Development & Earthworks, Dams & Canals, Water Supply Pipelines & Tunnels (Irrigation Department of Maharashtra), Railways (Railway Ministry of India), National Highways (NHAI, PWD) & Power Plant (NTPC) & Private Organisations (Volkswagen, Bajaj, Indiabulls & SANY).



Education:

In 2008, KJ's educational institutes came into existence.

Ten institutes span over a beautiful 110-acre campus with 15 Lakh sq. ft. constructed area.

KJEI (Trinity Academy of Engineering) is a community with a strength of around 10 thousand students.



Real Estate:

Spanning over 7 acres with residential and commercial spaces,

KJ Realty has forayed into the real estate arena and **KJ Towers** is its one of the greatest initiatives **in Warje**.



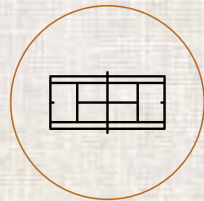
Presenting perfectly designed homes in Warje. Enjoy a lifelong open view from your abode, which provides ample sunlight and ventilation all year long. Live in a space that adds to your calmness while being seamlessly close to your everyday conveniences.



**RIGHT OFF
PUNE-BANGALORE
HIGHWAY**



**SUPER-SPACIOUS
SMART HOMES WITH
LARGE BALCONIES**



**LIFESTYLE
AMENITIES**



**SERENE
HILL VIEWS**



**5 MINS
FROM KOTHRUD**

A Locale that is

Big on Comfort Bigger on Convenience

Set amidst the massive KJ Towers is the epitome of seamless commute. Mountains, Being right off Pune-Bangalore Highway, absolutely nothing is out of reach. From city's hot spots to serene weekend destinations, everything is seamlessly close.



Scan QR Code for the Location



- Karve Nagar – 05 min
- Kothrud – 05 min

- Chandani Chowk – 07 min
- Bavdhan – 10 min

- Erandwane – 15 min
- Shivaji Nagar – 20 min

An Address – Better than the Best

From educational institutes to employment hubs, KJ Towers offers you a perfect address to lead a hassle-free lifestyle. Be it restaurants or malls, everything here is just round the corner.

HOSPITALS

Mai Mangeshkar	– 7 mins
City Hospital	– 8 mins
Sahyadri	– 12 mins

SHOPPING MALLS

Abhiruchi Mall	– 14 mins
Geetai Mall	– 15 mins
The Pavillion	– 20 mins

SUPER MARKETS

Dmart	– 7 mins
More Supermarket	– 9 mins

CINEMA HALLS

City Pride	– 12 mins
Abhiruchi Multiplex	– 14 mins

RESTAURANTS

Mystic Flavors	– 8 mins
Orchid Hotel	– 20 mins

COLLEGES

Sinhgad Technical Education Society	– 4 mins
RMD Singhad Technical Institute	– 5 mins
MKSSS's Cummins College of Engineering	– 9 mins

SCHOOLS

RMD Singhad Spring Dale school	– 4 mins
Aaryans World School	– 6 mins
Millennium National School	– 11 mins
Maharshi Karve Stree Shikshan Sanstha	– 11 mins
St. Xavier's School	– 14 mins



**GREAT ROOM SIZES
WITH
LARGE KITCHEN**



**LARGE BALCONIES
WITH LIVING ROOM FOR
DEDICATED WFH ZONE**



**VASTU
COMPLIANT
LAYOUTS**



**MAXIMUM PRIVACY
WITH 4 APARTMENTS
PER FLOOR**



**CLEAR
VIEWS**



**SMART HOME
AUTOMATION FOR
MODERN LIVING**



**AMPLE LIGHT
AND
VENTILATION**

Homes that are **Spacious, Smart, Secure.**

Get ready to start a new chapter of life at KJ Towers.
Enjoy meticulously designed space with state-of-the-art detailing and lead a one-of-a-kind lifestyle here.



Smart homes for a **hassle-free lifestyle.**

Better, Safer & Smarter that's how your homes are designed at KJ Towers.
Live in a space with a hint of tech and a whole lot of comfort and warmth here.
Explore super spacious abodes which make your life easier.



Amazing Amenities, **Exquisite Experiences.**

Open your arms to a wonderful world with bespoke amenities for every age group.
Enjoy an array of facilities that lead you towards a healthy & happening lifestyle.
From kids to elders there are special indulgences for everyone.



Specifications, **the best of all**

Thoughtful, immaculate and detailed that's how the homes at KJ Towers are crafted.
With excellent craftsmanship and high-end finesse the apartments here are stroked with perfection.



How do you feel about being in the center of majestic mountains, lush greenery, and scenic views as far as eyes can reach? Wonderful, isn't it? This is exactly what you get when you live at **KJ Towers.**

With four apartments per floor & large balconies, enjoy utmost privacy while you work and spend your me-time. Dive in the beauty of scenic views that gives you motivation and tranquility

This is the home that you can call your own with no traffic noises but calmness in your spaciouly crafted abodes that boasts of maximum security.



GYMNASIUM



SENIOR CITIZEN
SITTING AREA



INDOOR GAMES



SOCIETY OFFICE



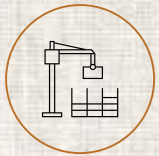
CHILDREN
PLAY AREA



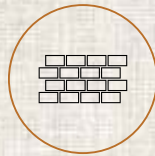
SKY WALK



BEAUTIFULLY DESIGNED
LANDSCAPE GARDEN



**EARTHQUAKE
RESISTANT RCC FRAME
STRUCTURE**



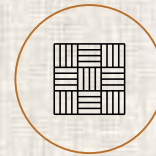
**INTERNAL AND EXTERNAL
WALLS AS PER THE
STRUCTURAL REQUIREMENT**



**ENTRANCE LOBBY
ON EACH FLOOR**



**ATTRACTIVE LED LIGHTING
FOR THE BUILDING
AND COMMON AREA**

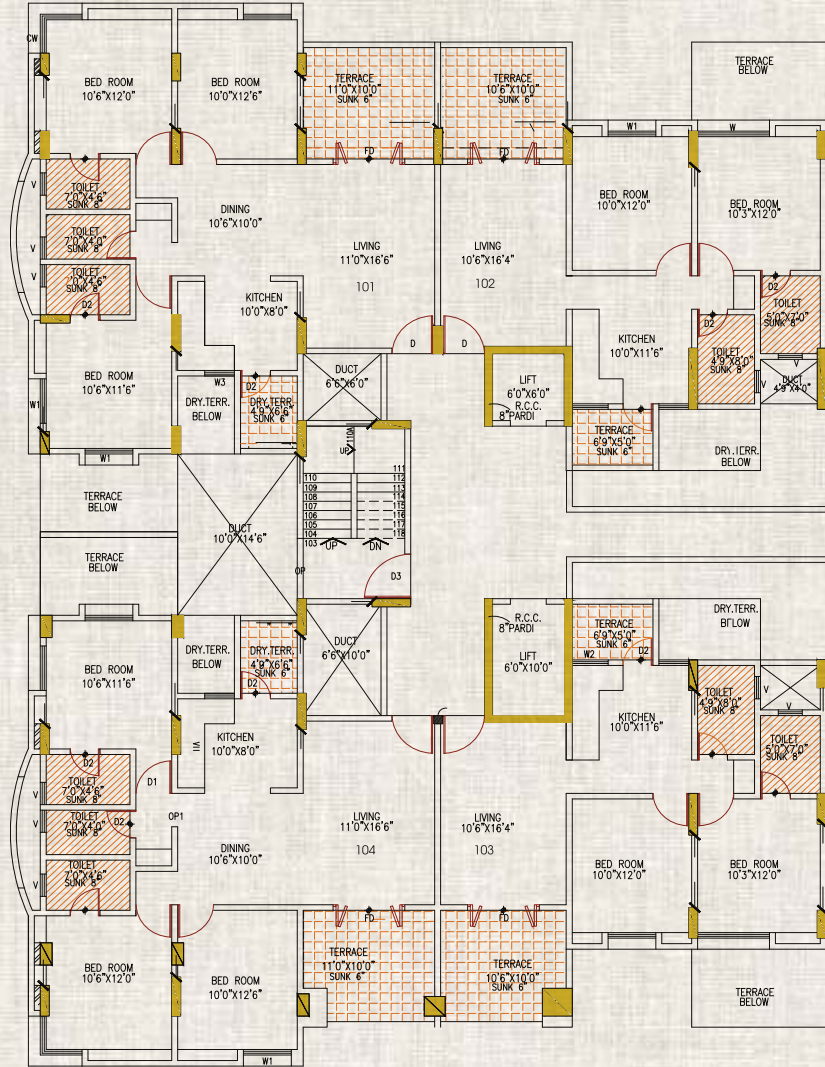


**VITRIFIED
FLOORING**

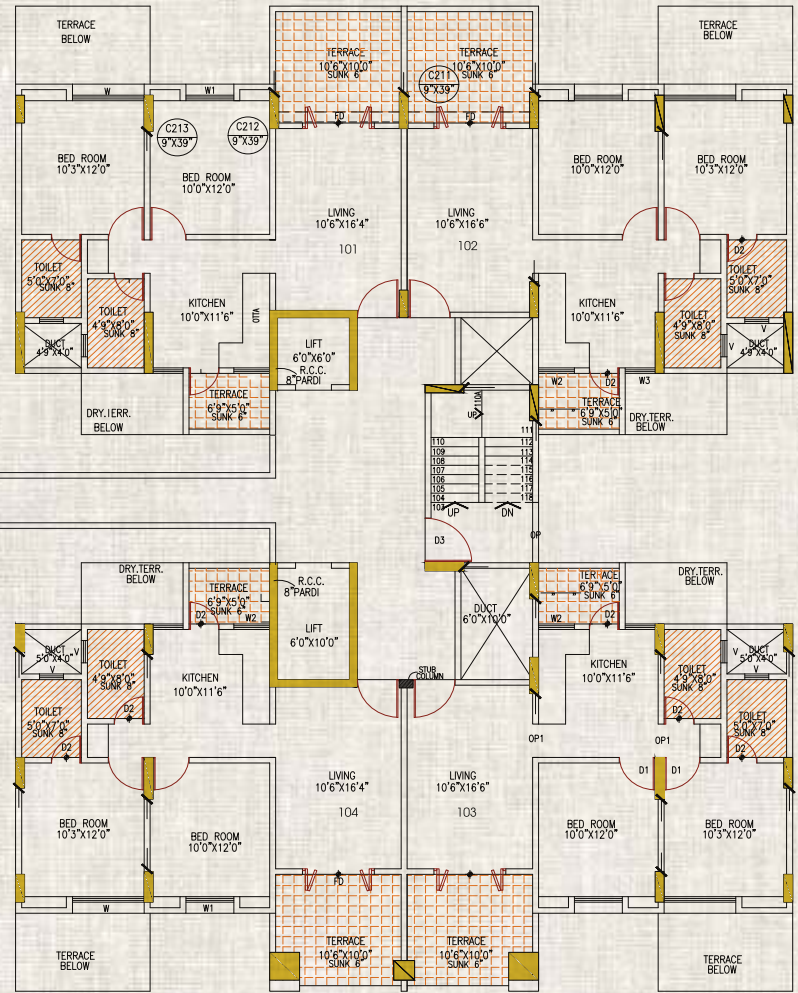


**SEWAGE
TREATMENT
PLANT**

WINGS A & B

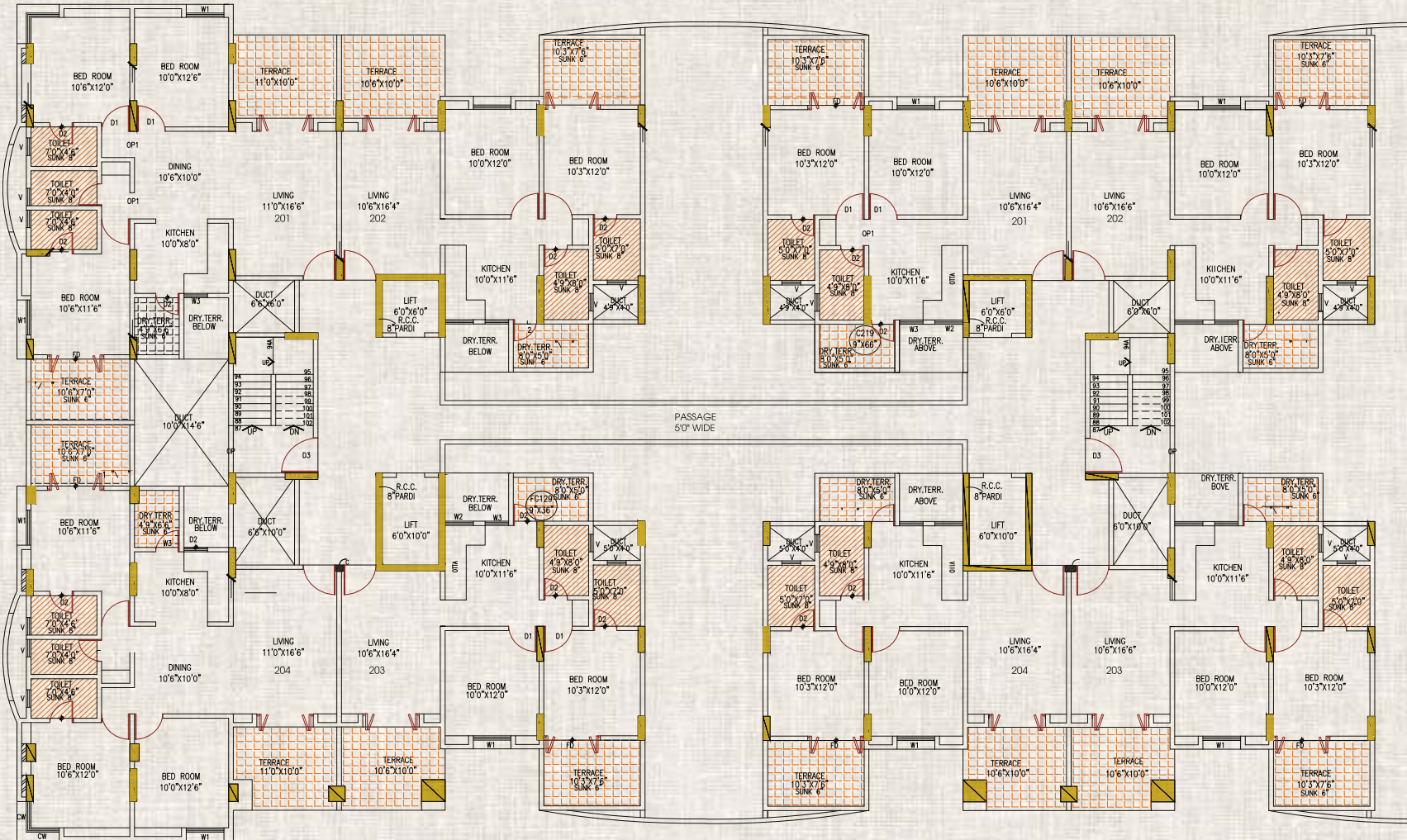


WING - A
ODD FLOOR PLAN



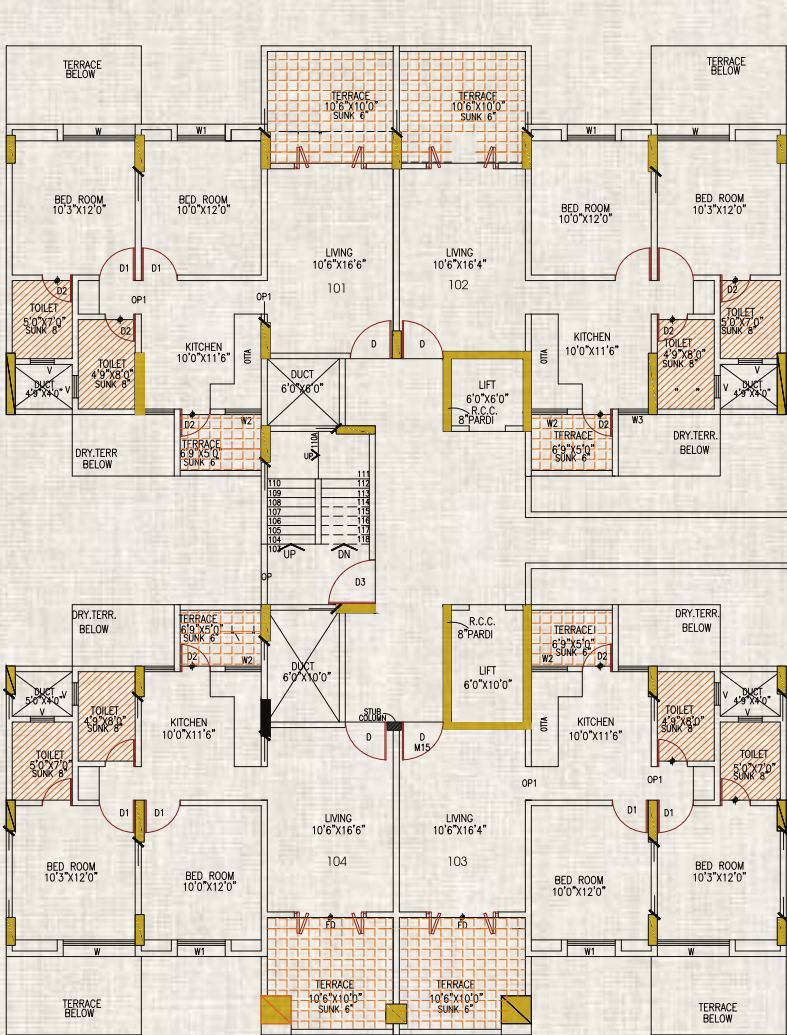
WING - B
ODD FLOOR PLAN

WINGS A & B

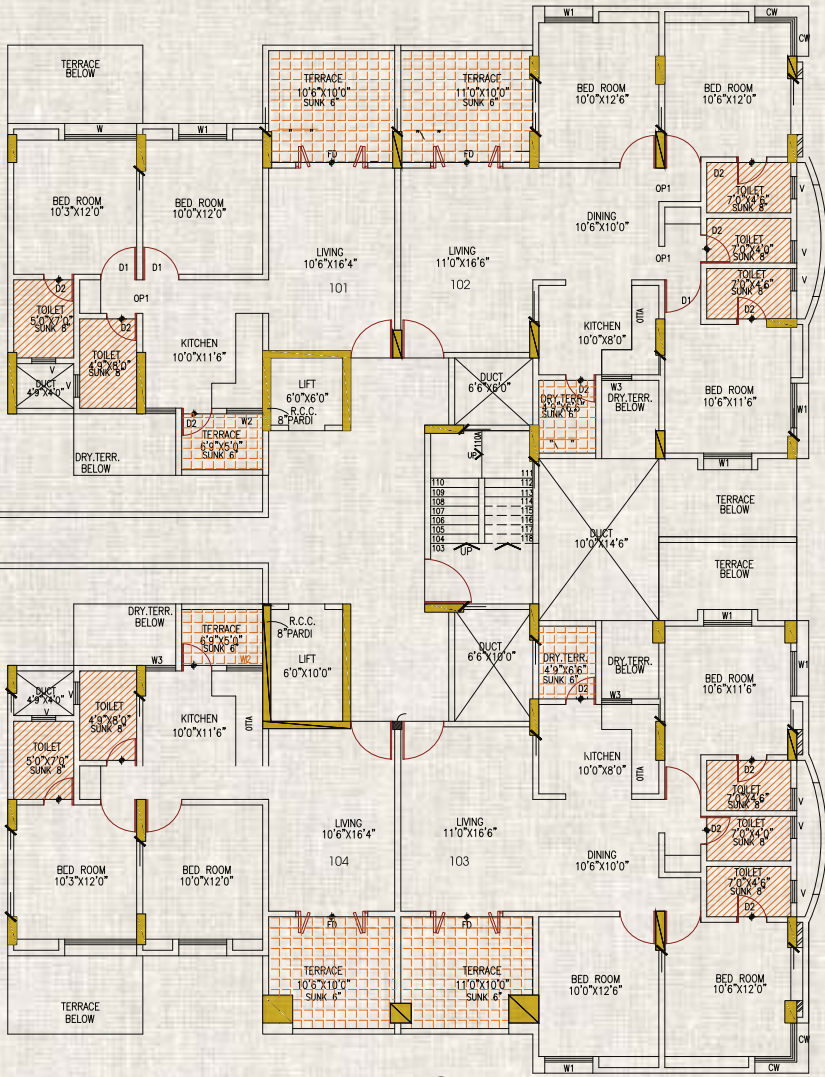


WING - A
EVEN FLOOR PLAN

WING - B
EVEN FLOOR PLAN

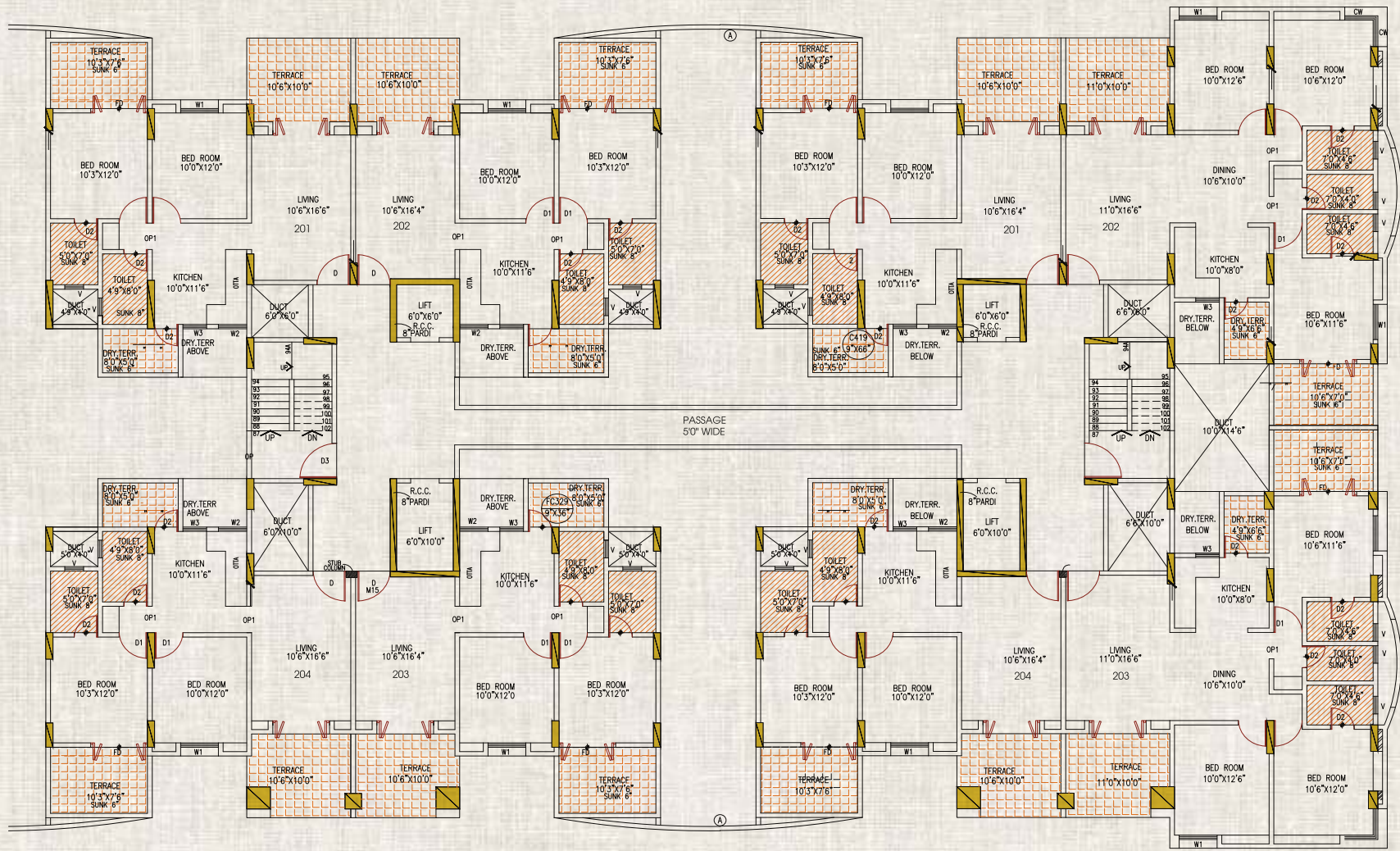


**WING - C
ODD FLOOR PLAN**



**WING - D
ODD FLOOR PLAN**

WINGS C & D



WING - C
EVEN FLOOR PLAN

WING - D
EVEN FLOOR PLAN



ARTISTIC IMPRESSION



ARTISTIC IMPRESSION



ARTISTIC IMPRESSION



ARTISTIC IMPRESSION



With all these facilities and super spacious abodes with large balcony spaces,
this is the home you are ideally looking for.

Hurry up and visit now the
Wonder
of
Warje



KJ TOWERS

Off Mumbai-Banglore Highway,
Near Mai Mangeshkar Hospital,
Warje, Pune - 411058,

CORPORATE OFFICE

9090 77 0101

SITE OFFICE

9090 88 0101

E-MAIL

sales@kjtowers.com

WEBSITE

www.kjtowers.com



MAHARERA Registration Number
P52100008908



EDUCATION



INFRASTRUCTURE



REAL ESTATE